

It's like having a guard in each guestroom



SENTINEL Standard



Basic digital security taken to a new level

With the Sentinel Standard in-room safe, you can rest assured that you've provided superior security for your valued guests. The sleek, ergonomic design and uncomplicated operation makes this exceptional new model convenient for your guests to use and affordable for you to purchase and maintain. Yet, its unique modular construction and interchangeable electronics makes adding advanced features or upgrading to new access technology as simple as changing the front panel of the safe. This uniquely flexible solution is based on Elsafe's proven reliability and state-of-the-art electronics. Operated with

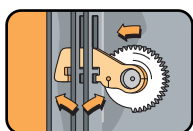
a guest-chosen 4-digit PIN code, the Sentinel Standard eliminates the risk of lost keys or cards, saving you both staff time and maintenance costs. The privacy of a PIN code also provides added peace of mind for your guests. In addition, you'll have the security of knowing that your in-room safes are backed by the worldwide leader in electronic safe technology. Constructed with extra security features such as a revolutionary locking mechanism and solid steel bolt hinges, the Sentinel Series provides exceptional strength that is setting new standards in the industry. In fact, with all these features in mind, it's apparent that there is nothing standard about this safe after all.

FEATURES

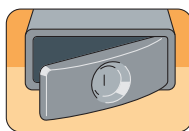
- Simple 4-digit PIN code operation
- Revolutionary locking system with interlocking deadbolt mechanism
- One piece, cold-pressed curved door is over 70% stronger than flat steel doors
- Extended solid steel bolt hinges for maximum security and durability
- Solid, arc-welded heavy-gauge steel construction and recessed back for superior strength and security
- Anti-tamper, auto relock function
- Audible confirmation tone for code entry
- Three convenient standard sizes available
- Attractive, ergonomic design
- Unique modular construction for easy upgradability

TECHNICAL INFORMATION

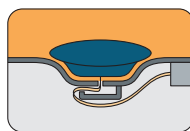
With the state of the art security features offered in the Sentinel Series of in-room safes, there is simply no better way to protect the property of your guests at such an affordable price. Based upon the Elsafe industry-leading Infinity Collection that has been widely applauded since being introduced, the Sentinel Series is setting new standards for strength and security, while offering an economical solution that won't break your budget.



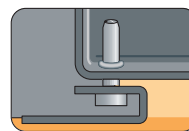
ELSAFE'S REVOLUTIONARY LOCKING SYSTEM RESISTS FORCIBLE ENTRY.



ONE-PIECE COLD-PRESSED DOOR IS OVER 70% STRONGER THAN FLAT STEEL DOORS.



ANTI-TAMPER LABYRINTHS PROTECT SENTINEL ELECTRONICS FROM MANIPULATION.



EXTENDED SOLID STEEL BOLT HINGES ARE SECURE AND ULTRA-RELIABLE.

Sentinel Standard		Model code SS		
Sizes		25, 41 and 49 cm external depth		
Measurements		SK25	SK41	SK49
Outside H/W/D	mm	200/432,3/250	200/432,2/412,6	200/432,2/493,4
	in	7 7/8 / 17 / 9 7/8	7 7/8 / 17 / 16 1/4	7 7/8 / 17 / 19 1/2
Inside H/W/D	mm	196/428,2/142,8	196/428,2/304,5	196/428,2/385,3
	in	7 3/4 / 160 7/8 / 5 5/8	7 3/4 / 160 7/8 / 12	7 3/4 / 160 7/8 / 15 5/32
Door opening H/W	mm	148/320	148/320	148/320
	in	5 3/4 / 12 9/16	5 3/4 / 12 9/16	5 3/4 / 12 9/16
Internal volume	litres	12	25,5	32,3
	cu ft	0,4	1	1,1
Weight	kg	10,8	13,9	15,5
	lb	23,8	30,6	34,2
Locking mechanism	Inter-locking deadbolt mechanism			
Locking/access code	4-digit			
Closing	Push button			
Inside carpet	Yes			
Display	No			
Beeper	Yes			
Override	Electronic key or the SafeLink			
Memory function	No			
Power supply	5 A4-cells in keyboard			
Steel thickness	Door, frame and back-wall: 2,5 mm / Body: 2 mm			
Fastening methods	Back wall: 2 bolts / Bottom: 4 bolts			

The Sentinel series consists of three more models:



Sentinel Advanced: One eye on the future – the other on the past.



Sentinel Plus: The difference is easy to see.



Sentinel SmartKey: A simple solution to superior guestroom security.